

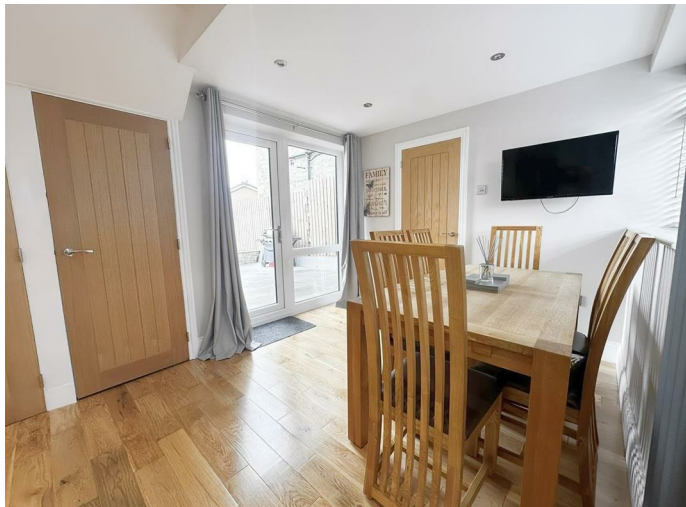


**Sunnybank Crescent, Greetland, HX4 8ND**  
**£300,000**

**E&H** Edkins Holmes  
ESTATE AGENTS

A well presented, extended three bedroom semi-detached with far reaching views. This turn key ready property benefits from stylish and spacious dining kitchen, utility and cloak facilities and an attractive outlook to the rear. Located in the thriving village of Greetland and with convenient access to local amenities, schools and the M62 this is an ideal family home.

The accommodation, in brief, comprises: Dining kitchen, lounge, rear entrance hall and both utility and cloakrooms to the ground floor. On the first floor there are three bedrooms and the house bathroom. To the front of the property is driveway parking for two cars and a patio seating area. To the rear of the house is a large lawn and patio garden.



**Dining Kitchen 8'11" x 24'9" (2.725 x 7.552)**

Modern fitted kitchen with a range of wall and base units and solid wood worktops and breakfast bar. Stainless steel single bowl sink. Eye level electric oven. Gas hob with stainless and glass cooker hood over. Integrated dishwasher. Cupboard housing boiler. Understairs cupboard. Designer radiator. Two UPVC double glazed windows to the front. Composite front door. UPVC double glazed door to rear.

**Lounge 14'0" into bay x 12'0" (4.286 into bay x 3.680)**

Coal effect, living flame, gas fire. Two radiators. UPVC double glazed bay window to rear with far reaching views.

**Utility Room 4'9" x 2.637'9" (1.460 x .0804)**

Plumbing for washing machine and space for a dryer.

**Cloakroom**

WC and wash hand basin.

**Rear Entrance Hall**

Radiator. Wooden door and window to rear with stained glass.

**Landing**

Loft access (access via pull down ladder, boarded with light). Stairs from rear entrance hall. UPVC double glazed window to side elevation.

**Bedroom One 10'11" x 9'9" to wardrobes (3.340 x 2.982 to wardrobes)**

Fitted wardrobes. Radiator. UPVC double glazed window to rear elevation with far reaching views.

**Bedroom Two 9'0" x 9'9" (2.751 x 2.992)**

Radiator. UPVC double glazed window to front elevation.

**Bedroom Three 6'7" x 5'7" (2.028 x 1.711)**

Currently utilised as a dressing room. Radiator. UPVC double glazed window to rear elevation with far reaching views.

**Bathroom**

White three piece suite comprising baht with mixer taps and shower over, wash hand basin and WC. Partially tiled.

Cupboard. Designer radiator. UPVC double glazed window to front elevation.

**Parking**

Driveway Parking for two cars.

**Gardens**

To the front of the property is a patio garden with shrubbery.

To the rear of the property is a large enclosed lawn garden with patio.

**Council Tax Band C****EPC Rating E****Location**

To find the property, you can download a free app called What3Words which every 3 metre square of the world has been given a unique combination of three words.

The three words designated to this property is [///rear.wonderfully.luck](http://rear.wonderfully.luck)

**Disclaimer**

DISCLAIMER: Whilst we endeavour to make our sales details accurate and reliable they should not be relied on as statements or representations of fact and do not constitute part of an offer or contract. The Seller does not make or give nor do we or our employees have authority to make or give any representation or warranty in relation to the property. Please contact the office before viewing the property to confirm that the property remains available. This is particularly important if you are contemplating travelling some distance to view the property. If there is any point which is of particular importance to you we will be pleased to check the information for you. We would strongly recommend that all the information which we provide about the property is verified by yourself on inspection and also by your conveyancer, especially where statements have been made to the effect that the information provided has not been verified.

We are not a member of a client money protection scheme.

